

WORKING WITH WHISTLEBLOWERS STARTER PACK

This starter pack contains resources developed by the **Office of the Whistleblower Ombuds**, an independent and nonpartisan House support office. Learn more about the Office's **services** and check out its complete **resource and training library**.

Contact the Office for confidential, customized guidance or for printed copies of these resources.



“ The written materials are fantastic. - House Staffer

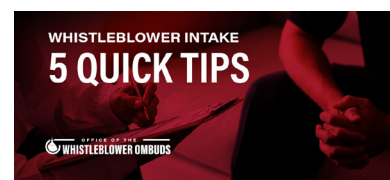
ONE PAGER: Guidance for Members on Working with Whistleblowers

This one pager provides an overview of how Member Offices can work effectively with whistleblower constituents and other sources.



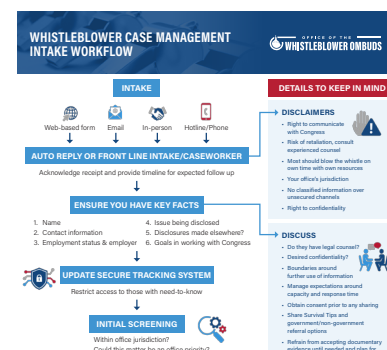
VIDEO: Whistleblower Intake 5 Quick Tips

This 4-minute video offers introductory guidance on conducting whistleblower intake.



INFOGRAPHIC: Whistleblower Case Management Intake Workflow with Guiding Phrases

The Office's infographic provides a one-page visual overview of the whistleblower intake and case management workflow. It guides staff through the intake process step by step while offering key disclaimers, discussion points, and methods for vetting allegations as well as follow-up along the way. It can be paired with **Guiding Phrases for Working with Whistleblowers**.



TRAINING MANUAL: Best Practices for Working with Whistleblowers

The Office's training manual provides foundational guidance and model resources for working with whistleblowers. Available on HouseNet alongside downloadable templates, the manual pairs with the Office's *Best Practices for Working with Whistleblowers* **training**, available to offices as a private session on request.

